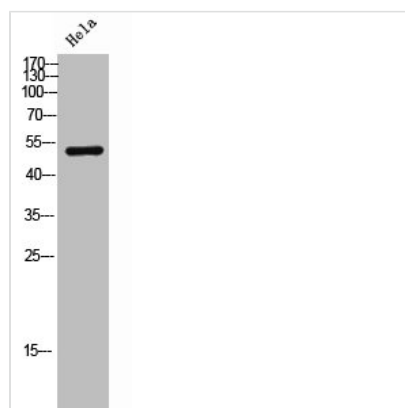




POLD3 Antibody

Product Code	CSB-PA006684
Storage	Upon receipt, store at -20°C or -80°C. Avoid repeated freeze.
Uniprot No.	Q15054
Immunogen	Synthesized peptide derived from the C-terminal region of Human DNA pol δ3.
Raised In	Rabbit
Species Reactivity	Human,Mouse,Rat
Tested Applications	WB, ELISA; WB:1:500-1:2000, ELISA:1:20000
Form	Liquid
Conjugate	Non-conjugated
Storage Buffer	Liquid in PBS containing 50% glycerol, 0.5% BSA and 0.02% sodium azide.
Purification Method	The antibody was affinity-purified from rabbit antiserum by affinity-chromatography using epitope-specific immunogen.
Isotype	IgG
Alias	POLD3; KIAA0039; DNA polymerase delta subunit 3; DNA polymerase delta subunit p66
Immunogen Species	Homo sapiens (Human)
Target Names	POLD3

Image



Western Blot analysis of hela cells using DNA pol δ3 Polyclonal Antibody