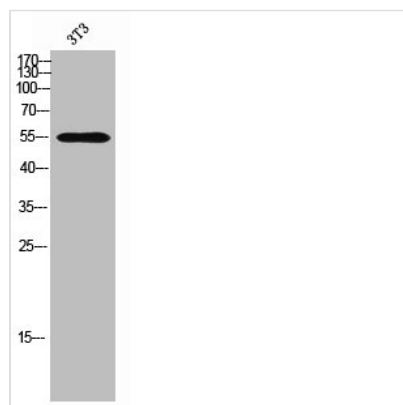




WASF3 Antibody

Product Code	CSB-PA006726
Storage	Upon receipt, store at -20°C or -80°C. Avoid repeated freeze.
Uniprot No.	Q9UPY6
Immunogen	Synthesized peptide derived from the Internal region of Human WAVE3.
Raised In	Rabbit
Species Reactivity	Human, Mouse
Tested Applications	WB, IHC, ELISA; WB:1:500-1:2000, IHC:1:100-1:300, ELISA:1:10000
Form	Liquid
Conjugate	Non-conjugated
Storage Buffer	Liquid in PBS containing 50% glycerol, 0.5% BSA and 0.02% sodium azide.
Purification Method	The antibody was affinity-purified from rabbit antiserum by affinity-chromatography using epitope-specific immunogen.
Isotype	IgG
Alias	WASF3; KIAA0900; SCAR3; WAVE3; Wiskott-Aldrich syndrome protein family member 3; WASP family protein member 3; Protein WAVE-3; Verprolin homology domain-containing protein 3
Immunogen Species	Homo sapiens (Human)
Target Names	WASF3

Image



Western Blot analysis of 3T3 cells using WAVE3 Polyclonal Antibody

Usage For Research Use Only. Not for use in diagnostic or therapeutic procedures.