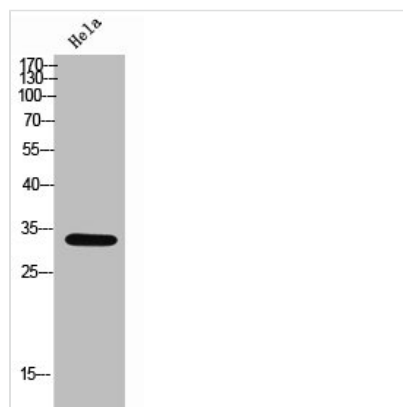




SRSF8 Antibody

Product Code	CSB-PA006745
Storage	Upon receipt, store at -20°C or -80°C. Avoid repeated freeze.
Uniprot No.	Q9BRL6
Immunogen	Synthesized peptide derived from the Internal region of Human SRp46.
Raised In	Rabbit
Species Reactivity	Human
Tested Applications	WB, IHC, ELISA; WB:1:500-1:2000, IHC:1:100-1:300, ELISA:1:40000
Form	Liquid
Conjugate	Non-conjugated
Storage Buffer	Liquid in PBS containing 50% glycerol, 0.5% BSA and 0.02% sodium azide.
Purification Method	The antibody was affinity-purified from rabbit antiserum by affinity-chromatography using epitope-specific immunogen.
Isotype	IgG
Alias	SRSF8; SFRS2B; SRP46; Serine/arginine-rich splicing factor 8; Pre-mRNA-splicing factor SRP46; Splicing factor SRp46; Splicing factor; arginine/serine-rich 2B
Immunogen Species	Homo sapiens (Human)
Target Names	SRSF8

Image



Western Blot analysis of HeLa cells using SRp46 Polyclonal Antibody

Usage For Research Use Only. Not for use in diagnostic or therapeutic procedures.