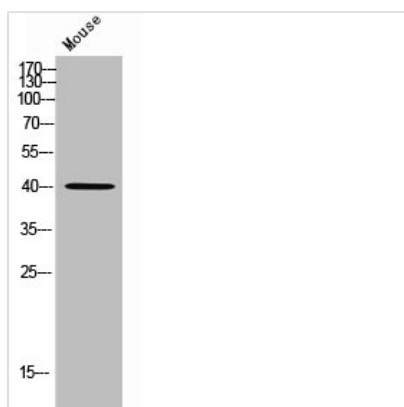




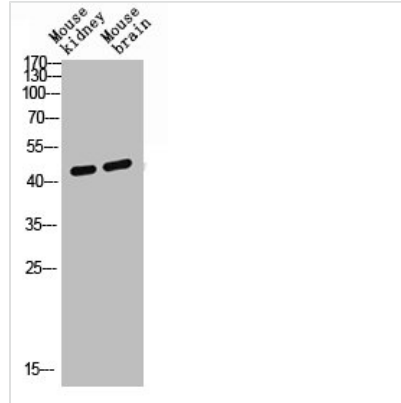
MORF4L1 Antibody

Product Code	CSB-PA006746
Storage	Upon receipt, store at -20°C or -80°C. Avoid repeated freeze.
Uniprot No.	Q9UBU8
Immunogen	Synthesized peptide derived from the Internal region of Human MRG15.
Raised In	Rabbit
Species Reactivity	Human, Mouse
Tested Applications	WB, IHC, IF, ELISA; WB:1:500-1:2000, IHC:1:100-1:300, IF:1:200-1:1000, ELISA:1:20000
Form	Liquid
Conjugate	Non-conjugated
Storage Buffer	Liquid in PBS containing 50% glycerol, 0.5% BSA and 0.02% sodium azide.
Purification Method	The antibody was affinity-purified from rabbit antiserum by affinity-chromatography using epitope-specific immunogen.
Isotype	IgG
Alias	MORF4L1; MRG15; FWP006; HSPC008; HSPC061; PP368; Mortality factor 4-like protein 1; MORF-related gene 15 protein; Protein MSL3-1; Transcription factor-like protein MRG15
Immunogen Species	Homo sapiens (Human)
Target Names	MORF4L1

Image



Western Blot analysis of mouse cells using MRG15 Polyclonal Antibody



Western blot analysis of Mouse-kidney mouse-brain lysis using MRG15 antibody.

Usage

For Research Use Only. Not for use in diagnostic or therapeutic procedures.