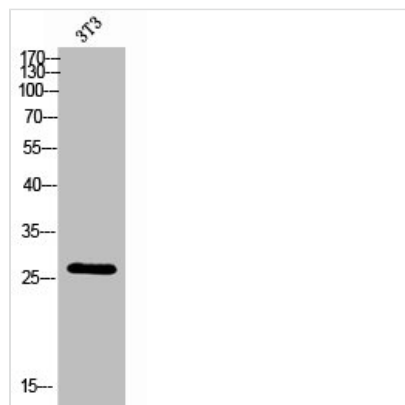




KDEL3 Antibody

Product Code	CSB-PA006758
Storage	Upon receipt, store at -20°C or -80°C. Avoid repeated freeze.
Uniprot No.	O43731
Immunogen	Synthesized peptide derived from the Internal region of Human KDEL Receptor 3.
Raised In	Rabbit
Species Reactivity	Human, Mouse
Tested Applications	WB, IHC, ELISA; WB:1:500-1:2000, IHC:1:100-1:300, ELISA:1:20000
Form	Liquid
Conjugate	Non-conjugated
Storage Buffer	Liquid in PBS containing 50% glycerol, 0.5% BSA and 0.02% sodium azide.
Purification Method	The antibody was affinity-purified from rabbit antiserum by affinity-chromatography using epitope-specific immunogen.
Isotype	IgG
Alias	KDEL3; ER lumen protein retaining receptor 3; KDEL endoplasmic reticulum protein retention receptor 3; KDEL receptor 3
Immunogen Species	Homo sapiens (Human)
Target Names	KDEL3

Image



Western Blot analysis of 3T3 cells using KDEL Receptor 3 Polyclonal Antibody