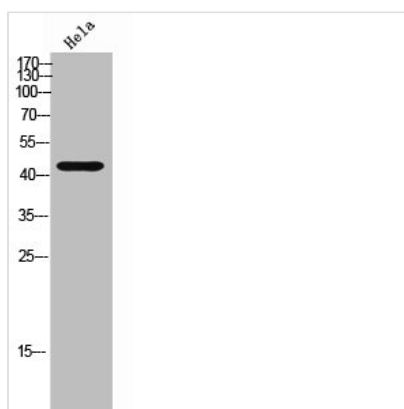




CHRM2 Antibody

Product Code	CSB-PA006807
Storage	Upon receipt, store at -20°C or -80°C. Avoid repeated freeze.
Uniprot No.	P08172
Immunogen	Synthesized peptide derived from the Internal region of Human mAChR M2.
Raised In	Rabbit
Species Reactivity	Human,Mouse,Rat
Tested Applications	WB, IF, ELISA; WB:1:500-1:2000, IF:1:200-1:1000, ELISA:1:20000
Form	Liquid
Conjugate	Non-conjugated
Storage Buffer	Liquid in PBS containing 50% glycerol, 0.5% BSA and 0.02% sodium azide.
Purification Method	The antibody was affinity-purified from rabbit antiserum by affinity-chromatography using epitope-specific immunogen.
Isotype	IgG
Alias	CHRM2; Muscarinic acetylcholine receptor M2
Immunogen Species	Homo sapiens (Human)
Target Names	CHRM2

Image



Western Blot analysis of HeLa cells using mAChR M2 Polyclonal Antibody

Usage

For Research Use Only. Not for use in diagnostic or therapeutic procedures.