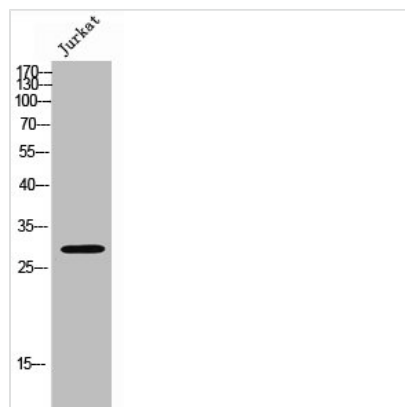




MED8 Antibody

Product Code	CSB-PA006810
Storage	Upon receipt, store at -20°C or -80°C. Avoid repeated freeze.
Uniprot No.	Q96G25
Immunogen	Synthesized peptide derived from the Internal region of Human Med8.
Raised In	Rabbit
Species Reactivity	Human,Mouse,Rat
Tested Applications	WB, ELISA; WB:1:500-1:2000, ELISA:1:5000
Form	Liquid
Conjugate	Non-conjugated
Storage Buffer	Liquid in PBS containing 50% glycerol, 0.5% BSA and 0.02% sodium azide.
Purification Method	The antibody was affinity-purified from rabbit antiserum by affinity-chromatography using epitope-specific immunogen.
Isotype	IgG
Alias	MED8; Mediator of RNA polymerase II transcription subunit 8; Activator-recruited cofactor 32 kDa component; ARC32; Mediator complex subunit 8
Immunogen Species	Homo sapiens (Human)
Target Names	MED8

Image



Western Blot analysis of JK cells using Med8 Polyclonal Antibody

Usage

For Research Use Only. Not for use in diagnostic or therapeutic procedures.