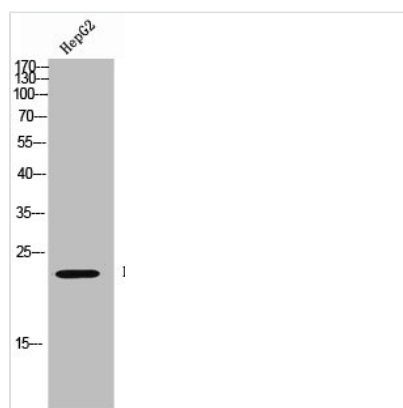




CBX3 Antibody

Product Code	CSB-PA006815
Storage	Upon receipt, store at -20°C or -80°C. Avoid repeated freeze.
Uniprot No.	Q13185
Immunogen	Synthesized peptide derived from Human HP1 γ around the non-phosphorylation site of S93.
Raised In	Rabbit
Species Reactivity	Human,Mouse,Rat
Tested Applications	WB, IHC, ELISA; WB:1:500-1:2000, IHC:1:100-1:300, ELISA:1:40000
Form	Liquid
Conjugate	Non-conjugated
Storage Buffer	Liquid in PBS containing 50% glycerol, 0.5% BSA and 0.02% sodium azide.
Purification Method	The antibody was affinity-purified from rabbit antiserum by affinity-chromatography using epitope-specific immunogen.
Isotype	IgG
Alias	CBX3; Chromobox protein homolog 3; HECH; Heterochromatin protein 1 homolog gamma; HP1 gamma; Modifier 2 protein
Immunogen Species	Homo sapiens (Human)
Target Names	CBX3

Image



Western Blot analysis of HEPG2 cells using HP1 γ Polyclonal Antibody

Usage For Research Use Only. Not for use in diagnostic or therapeutic procedures.