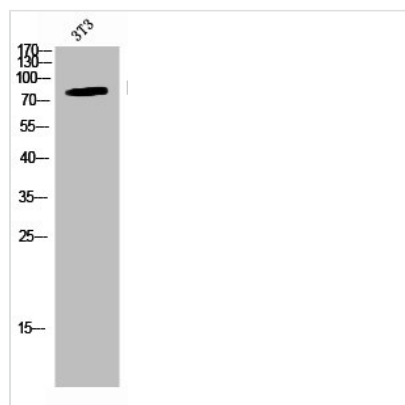




# Phospho-CHUK/IKBKB (S176/177) Antibody

<b>Product Code</b>	CSB-PA006829
<b>Storage</b>	Upon receipt, store at -20°C or -80°C. Avoid repeated freeze.
<b>Uniprot No.</b>	O15111/O14920
<b>Immunogen</b>	Synthesized peptide derived from Human IKK $\alpha$ / $\beta$ around the phosphorylation site of S176/177.
<b>Raised In</b>	Rabbit
<b>Species Reactivity</b>	Human,Mouse,Rat
<b>Tested Applications</b>	WB, IHC, ELISA; WB:1:500-1:2000, IHC:1:100-1:300, ELISA:1:10000
<b>Form</b>	Liquid
<b>Conjugate</b>	Non-conjugated
<b>Storage Buffer</b>	Liquid in PBS containing 50% glycerol, 0.5% BSA and 0.02% sodium azide.
<b>Purification Method</b>	The antibody was affinity-purified from rabbit antiserum by affinity-chromatography using epitope-specific immunogen.
<b>Isotype</b>	IgG
<b>Alias</b>	CHUK; IKKA; TCF16; Inhibitor of nuclear factor kappa-B kinase subunit alpha; I-kappa-B kinase alpha; IKK-A; IKK-alpha; IkbKA; IkappaB kinase; Conserved helix-loop-helix ubiquitous kinase; I-kappa-B kinase 1; IKK1; Nuclear factor NF-kappa-B
<b>Immunogen Species</b>	Homo sapiens (Human)
<b>Target Names</b>	CHUK/IKBKB

## Image



Western Blot analysis of NIH-3T3 cells using Phospho-IKK $\alpha$ / $\beta$  (S176/177) Polyclonal Antibody