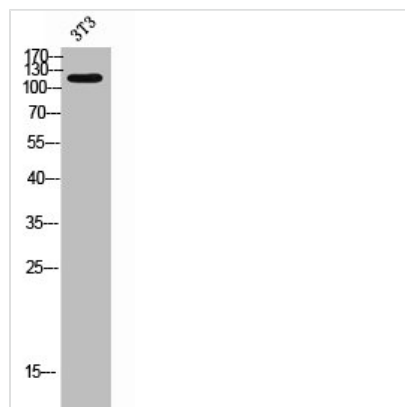




LMTK3 Antibody

Product Code	CSB-PA006834
Storage	Upon receipt, store at -20°C or -80°C. Avoid repeated freeze.
Uniprot No.	Q96Q04
Immunogen	Synthesized peptide derived from the C-terminal region of Human LMTK3.
Raised In	Rabbit
Species Reactivity	Human, Mouse
Tested Applications	WB, IHC, ELISA; WB:1:500-1:2000, IHC:1:100-1:300, ELISA:1:20000
Form	Liquid
Conjugate	Non-conjugated
Storage Buffer	Liquid in PBS containing 50% glycerol, 0.5% BSA and 0.02% sodium azide.
Purification Method	The antibody was affinity-purified from rabbit antiserum by affinity-chromatography using epitope-specific immunogen.
Isotype	IgG
Alias	LMTK3; KIAA1883; TYKLM3; Serine/threonine-protein kinase LMTK3; Lemur tyrosine kinase 3
Immunogen Species	Homo sapiens (Human)
Target Names	LMTK3

Image



Western Blot analysis of 3T3 cells using LMTK3 Polyclonal Antibody