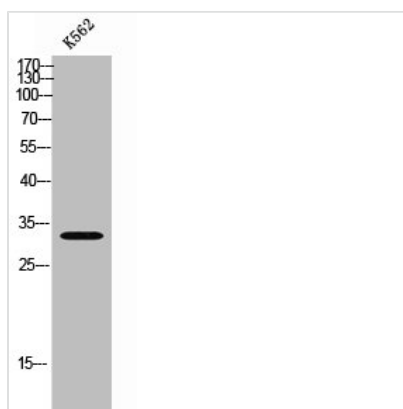




CIB3 Antibody

Product Code	CSB-PA006896
Storage	Upon receipt, store at -20°C or -80°C. Avoid repeated freeze.
Uniprot No.	Q96Q77
Immunogen	Synthesized peptide derived from the C-terminal region of Human CIB3.
Raised In	Rabbit
Species Reactivity	Human, Mouse
Tested Applications	WB, ELISA; WB:1:500-1:2000, ELISA:1:20000
Form	Liquid
Conjugate	Non-conjugated
Storage Buffer	Liquid in PBS containing 50% glycerol, 0.5% BSA and 0.02% sodium azide.
Purification Method	The antibody was affinity-purified from rabbit antiserum by affinity-chromatography using epitope-specific immunogen.
Isotype	IgG
Alias	CIB3; KIP3; Calcium and integrin-binding family member 3; Kinase-interacting protein 3; KIP 3
Immunogen Species	Homo sapiens (Human)
Target Names	CIB3

Image



Western Blot analysis of K562 cells using CIB3 Polyclonal Antibody

Usage

For Research Use Only. Not for use in diagnostic or therapeutic procedures.