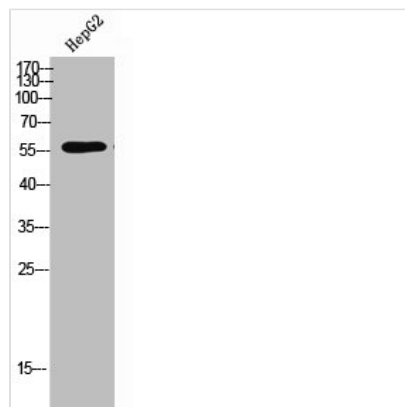




Phospho-TPH2 (S19) Antibody

Product Code	CSB-PA006958
Storage	Upon receipt, store at -20°C or -80°C. Avoid repeated freeze.
Uniprot No.	Q8IWU9
Immunogen	Synthesized peptide derived from Human TPH2 around the phosphorylation site of S19.
Raised In	Rabbit
Species Reactivity	Human, Mouse, Rat
Tested Applications	WB, ELISA; WB:1:500-1:2000, ELISA:1:40000
Form	Liquid
Conjugate	Non-conjugated
Storage Buffer	Liquid in PBS containing 50% glycerol, 0.5% BSA and 0.02% sodium azide.
Purification Method	The antibody was affinity-purified from rabbit antiserum by affinity-chromatography using epitope-specific immunogen.
Isotype	IgG
Alias	TPH2; NTPH; Tryptophan 5-hydroxylase 2; Neuronal tryptophan hydroxylase; Tryptophan 5-monoxygenase 2
Immunogen Species	Homo sapiens (Human)
Target Names	TPH2

Image



Western Blot analysis of HepG2 cells using Phospho-TPH2 (S19) Polyclonal Antibody

Usage For Research Use Only. Not for use in diagnostic or therapeutic procedures.