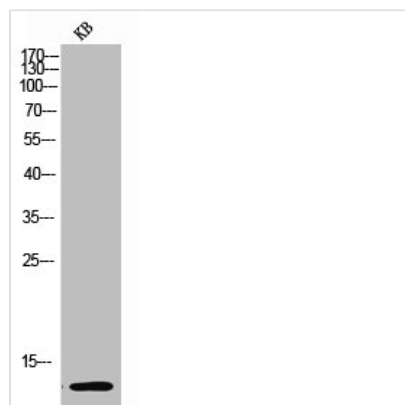




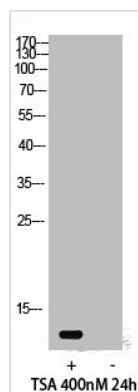
# Acetyl-Histone H4 (K12) Antibody

<b>Product Code</b>	CSB-PA006964
<b>Storage</b>	Upon receipt, store at -20°C or -80°C. Avoid repeated freeze.
<b>Uniprot No.</b>	P62805
<b>Immunogen</b>	Synthesized peptide derived from Human Histone H4 around the acetylation site of K12.
<b>Raised In</b>	Rabbit
<b>Species Reactivity</b>	Human,Mouse,Rat,Monkey
<b>Tested Applications</b>	WB, IHC, IF, ELISA; WB:1:500-1:2000, IHC:1:100-1:300, IF:1:200-1:1000, ELISA:1:10000
<b>Form</b>	Liquid
<b>Conjugate</b>	Non-conjugated
<b>Storage Buffer</b>	Liquid in PBS containing 50% glycerol, 0.5% BSA and 0.02% sodium azide.
<b>Purification Method</b>	The antibody was affinity-purified from rabbit antiserum by affinity-chromatography using epitope-specific immunogen.
<b>Isotype</b>	IgG
<b>Alias</b>	HIST1H4A; H4/A; H4FA; HIST1H4B; H4/I; H4FI; HIST1H4C; H4/G; H4FG; HIST1H4D; H4/B; H4FB; HIST1H4E; H4/J; H4FJ; HIST1H4F; H4/C; H4FC; HIST1H4H; H4/H; H4FH; HIST1H4I; H4/M; H4FM; HIST1H4J; H4/E; H4FE; HIST1H4K; H4/D; H4FD; HIST1H4L; H4/K; H4FK
<b>Immunogen Species</b>	Homo sapiens (Human)
<b>Target Names</b>	HIST1H4A

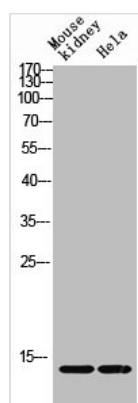
## Image



Western Blot analysis of KB cells using Acetyl-Histone H4 (K12) Polyclonal Antibody



Western Blot analysis of 293 cells using Acetyl-Histone H4 (K12) Polyclonal Antibody



Western blot analysis of Mouse-kidney HELA lysis using Acetyl-Histone H4 (K12) antibody.