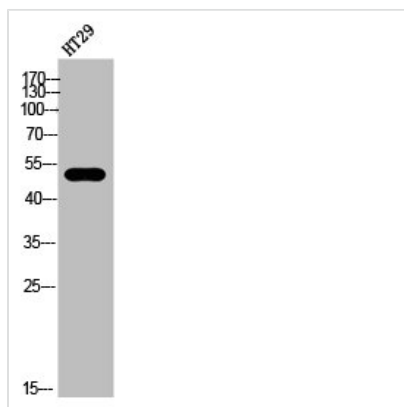




CNR1 Antibody

Product Code	CSB-PA007048
Storage	Upon receipt, store at -20°C or -80°C. Avoid repeated freeze.
Uniprot No.	P21554
Immunogen	Synthesized peptide derived from the Internal region of Human CB1.
Raised In	Rabbit
Species Reactivity	Human,Mouse,Rat,Monkey
Tested Applications	WB, IHC, IF, ELISA; WB:1:500-1:2000, IHC:1:100-1:300, IF:1:200-1:1000, ELISA:1:10000
Form	Liquid
Conjugate	Non-conjugated
Storage Buffer	Liquid in PBS containing 50% glycerol, 0.5% BSA and 0.02% sodium azide.
Purification Method	The antibody was affinity-purified from rabbit antiserum by affinity-chromatography using epitope-specific immunogen.
Isotype	IgG
Alias	CNR1; CNR; Cannabinoid receptor 1; CB-R; CB1; CANN6
Immunogen Species	Homo sapiens (Human)
Target Names	CNR1

Image



Western Blot analysis of HT-29 cells using CB1 Polyclonal Antibody