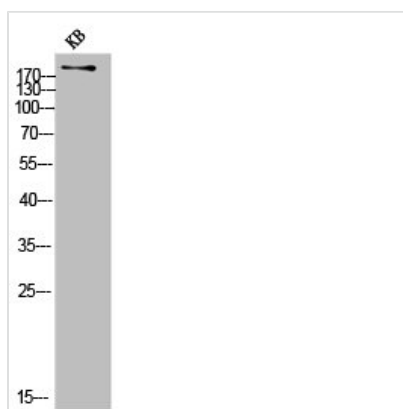




COL11A1 Antibody

Product Code	CSB-PA007113
Storage	Upon receipt, store at -20°C or -80°C. Avoid repeated freeze.
Uniprot No.	P12107
Immunogen	Synthesized peptide derived from the Internal region of Human COL11A1.
Raised In	Rabbit
Species Reactivity	Human, Mouse
Tested Applications	WB, IHC, IF, ELISA; WB:1:500-1:2000, IHC:1:100-1:300, IF:1:200-1:1000, ELISA:1:10000
Form	Liquid
Conjugate	Non-conjugated
Storage Buffer	Liquid in PBS containing 50% glycerol, 0.5% BSA and 0.02% sodium azide.
Purification Method	The antibody was affinity-purified from rabbit antiserum by affinity-chromatography using epitope-specific immunogen.
Isotype	IgG
Alias	COL11A1; COLL6; Collagen alpha-1(XI) chain
Immunogen Species	Homo sapiens (Human)
Target Names	COL11A1

Image



Western Blot analysis of KB cells using COL11A1 Polyclonal Antibody

Usage For Research Use Only. Not for use in diagnostic or therapeutic procedures.