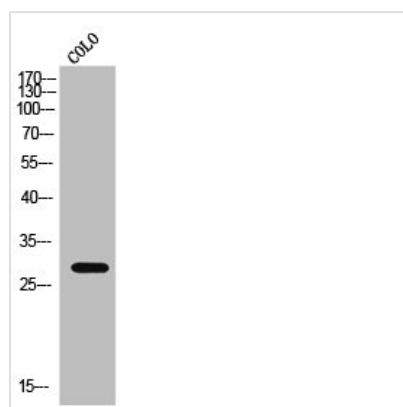




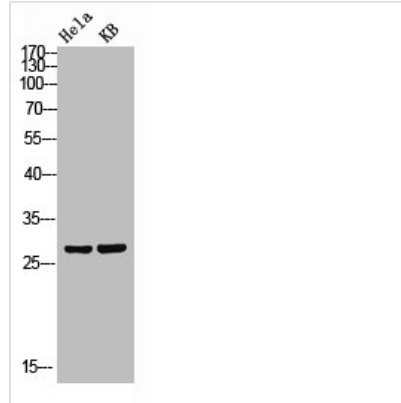
CLDN3 Antibody

Product Code	CSB-PA007225
Storage	Upon receipt, store at -20°C or -80°C. Avoid repeated freeze.
Uniprot No.	O15551
Immunogen	Synthesized peptide derived from Human Claudin-3 around the non-phosphorylation site of Y219.
Raised In	Rabbit
Species Reactivity	Human
Tested Applications	WB, IHC, ELISA; WB:1:500-1:2000, IHC:1:100-1:300, ELISA:1:5000
Form	Liquid
Conjugate	Non-conjugated
Storage Buffer	Liquid in PBS containing 50% glycerol, 0.5% BSA and 0.02% sodium azide.
Purification Method	The antibody was affinity-purified from rabbit antiserum by affinity-chromatography using epitope-specific immunogen.
Isotype	IgG
Alias	CLDN3; C7orf1; CPETR2; Claudin-3; Clostridium perfringens enterotoxin receptor 2; CPE-R 2; CPE-receptor 2; Rat ventral prostate.1 protein homolog; hRVP1
Immunogen Species	Homo sapiens (Human)
Target Names	CLDN3

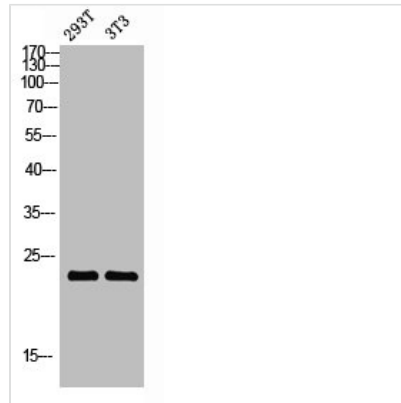
Image



Western Blot analysis of COLO cells using Claudin-3 Polyclonal Antibody



Western blot analysis of HeLa KB lysis using Claudin-3 antibody.



Western blot analysis of 293T 3T3 lysis using Claudin-3 antibody.

Usage

For Research Use Only. Not for use in diagnostic or therapeutic procedures.