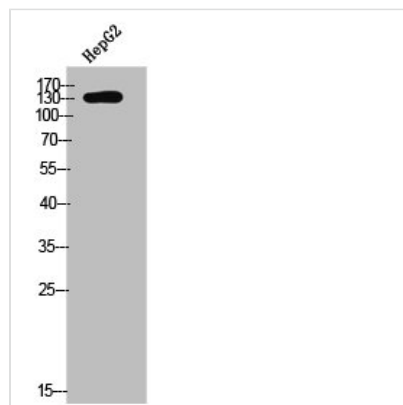




Phospho-CSF1R (Y561) Antibody

Product Code	CSB-PA007332
Storage	Upon receipt, store at -20°C or -80°C. Avoid repeated freeze.
Uniprot No.	P07333
Immunogen	Synthesized peptide derived from Human c-Fms around the phosphorylation site of Y561.
Raised In	Rabbit
Species Reactivity	Human,Mouse,Rat
Tested Applications	WB, IHC, ELISA; WB:1:500-1:2000, IHC:1:100-1:300, ELISA:1:10000
Form	Liquid
Conjugate	Non-conjugated
Storage Buffer	Liquid in PBS containing 50% glycerol, 0.5% BSA and 0.02% sodium azide.
Purification Method	The antibody was affinity-purified from rabbit antiserum by affinity-chromatography using epitope-specific immunogen.
Isotype	IgG
Alias	CSF1R; FMS; Macrophage colony-stimulating factor 1 receptor; CSF-1 receptor; CSF-1-R; CSF-1R; M-CSF-R; Proto-oncogene c-Fms; CD antigen CD115
Immunogen Species	Homo sapiens (Human)
Target Names	CSF1R

Image



Western Blot analysis of HepG2 cells using Phospho-c-Fms (Y561) Polyclonal Antibody

Usage

For Research Use Only. Not for use in diagnostic or therapeutic procedures.