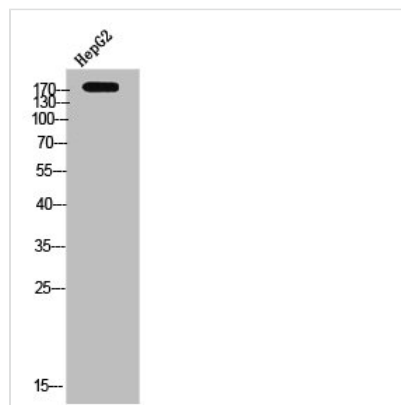




# CSF1R Antibody

|                            |   |
|----------------------------|---|
| <b>Product Code</b>        | CSB-PA007335  |
| <b>Storage</b>             | Upon receipt, store at -20°C or -80°C. Avoid repeated freeze.   |
| <b>Uniprot No.</b>         | P07333  |
| <b>Immunogen</b>           | Synthesized peptide derived from Human c-Fms around the non-phosphorylation site of Y699.   |
| <b>Raised In</b>           | Rabbit  |
| <b>Species Reactivity</b>  | Human   |
| <b>Tested Applications</b> | WB, ELISA; WB:1:500-1:2000, ELISA:1:10000   |
| <b>Form</b>                | Liquid  |
| <b>Conjugate</b>           | Non-conjugated  |
| <b>Storage Buffer</b>      | Liquid in PBS containing 50% glycerol, 0.5% BSA and 0.02% sodium azide.   |
| <b>Purification Method</b> | The antibody was affinity-purified from rabbit antiserum by affinity-chromatography using epitope-specific immunogen.                         |
| <b>Isotype</b>             | IgG   |
| <b>Alias</b>               | CSF1R; FMS; Macrophage colony-stimulating factor 1 receptor; CSF-1 receptor; CSF-1-R; CSF-1R; M-CSF-R; Proto-oncogene c-Fms; CD antigen CD115 |
| <b>Immunogen Species</b>   | Homo sapiens (Human)  |
| <b>Target Names</b>        | CSF1R   |

## Image



Western Blot analysis of HepG2 cells using c-Fms Polyclonal Antibody

## Usage

For Research Use Only. Not for use in diagnostic or therapeutic procedures.