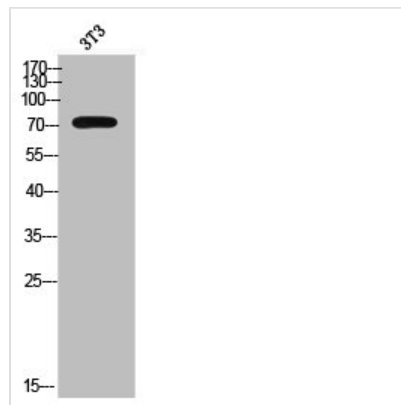




ALS2CR11 Antibody

Product Code	CSB-PA007455
Storage	Upon receipt, store at -20°C or -80°C. Avoid repeated freeze.
Uniprot No.	Q53TS8
Immunogen	Synthesized peptide derived from the C-terminal region of Human ALS2CR11.
Raised In	Rabbit
Species Reactivity	Human
Tested Applications	WB, ELISA; WB:1:500-1:2000, ELISA:1:40000
Form	Liquid
Conjugate	Non-conjugated
Storage Buffer	Liquid in PBS containing 50% glycerol, 0.5% BSA and 0.02% sodium azide.
Purification Method	The antibody was affinity-purified from rabbit antiserum by affinity-chromatography using epitope-specific immunogen.
Isotype	IgG
Alias	ALS2CR11; Amyotrophic lateral sclerosis 2 chromosomal region candidate gene 11 protein
Immunogen Species	Homo sapiens (Human)
Target Names	C2CD6

Image



Western Blot analysis of 3T3 cells using ALS2CR11 Polyclonal Antibody

Usage

For Research Use Only. Not for use in diagnostic or therapeutic procedures.