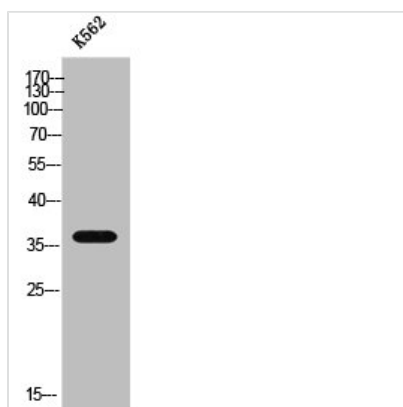




BTLA Antibody

Product Code	CSB-PA007471
Storage	Upon receipt, store at -20°C or -80°C. Avoid repeated freeze.
Uniprot No.	Q7Z6A9
Immunogen	Synthesized peptide derived from the Internal region of Human CD272.
Raised In	Rabbit
Species Reactivity	Human
Tested Applications	WB, ELISA; WB:1:500-1:2000, ELISA:1:40000
Form	Liquid
Conjugate	Non-conjugated
Storage Buffer	Liquid in PBS containing 50% glycerol, 0.5% BSA and 0.02% sodium azide.
Purification Method	The antibody was affinity-purified from rabbit antiserum by affinity-chromatography using epitope-specific immunogen.
Isotype	IgG
Alias	BTLA; B- and T-lymphocyte attenuator; B- and T-lymphocyte-associated protein; CD antigen CD272
Immunogen Species	Homo sapiens (Human)
Target Names	BTLA

Image



Western Blot analysis of K562 cells using CD272 Polyclonal Antibody

Usage

For Research Use Only. Not for use in diagnostic or therapeutic procedures.