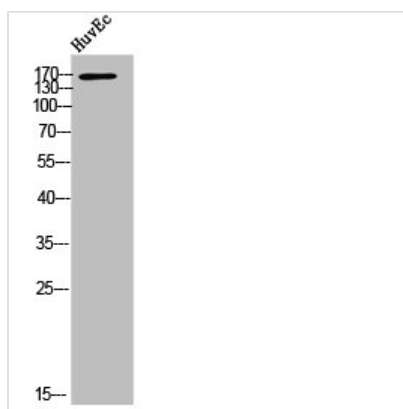




ACE Antibody

Product Code	CSB-PA007661
Storage	Upon receipt, store at -20°C or -80°C. Avoid repeated freeze.
Uniprot No.	P12821
Immunogen	Synthesized peptide derived from the Internal region of Human ACE1.
Raised In	Rabbit
Species Reactivity	Human,Mouse,Rat
Tested Applications	WB, IHC, ELISA; WB:1:500-1:2000, IHC:1:100-1:300, ELISA:1:10000
Form	Liquid
Conjugate	Non-conjugated
Storage Buffer	Liquid in PBS containing 50% glycerol, 0.5% BSA and 0.02% sodium azide.
Purification Method	The antibody was affinity-purified from rabbit antiserum by affinity-chromatography using epitope-specific immunogen.
Isotype	IgG
Alias	ACE; DCP; DCP1; Angiotensin-converting enzyme; ACE; Dipeptidyl carboxypeptidase I; Kininase II; CD antigen CD143
Immunogen Species	Homo sapiens (Human)
Target Names	ACE

Image



Western Blot analysis of HuvEc cells using ACE1 Polyclonal Antibody

Usage

For Research Use Only. Not for use in diagnostic or therapeutic procedures.