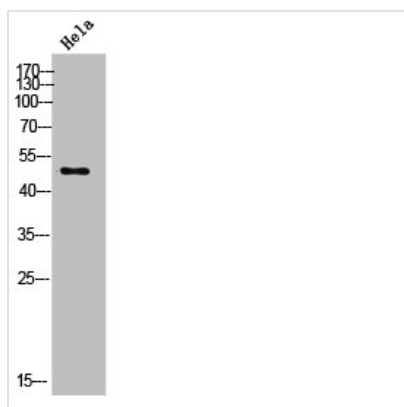




KCNJ16 Antibody

Product Code	CSB-PA007704
Storage	Upon receipt, store at -20°C or -80°C. Avoid repeated freeze.
Uniprot No.	Q9NPI9
Immunogen	Synthesized peptide derived from Mouse KIR5.1 around the non-phosphorylation site of S416.
Raised In	Rabbit
Species Reactivity	Human,Mouse,Rat
Tested Applications	WB, IHC, IF, ELISA; WB:1:500-1:2000, IHC:1:100-1:300, IF:1:200-1:1000, ELISA:1:10000
Form	Liquid
Conjugate	Non-conjugated
Storage Buffer	Liquid in PBS containing 50% glycerol, 0.5% BSA and 0.02% sodium azide.
Purification Method	The antibody was affinity-purified from rabbit antiserum by affinity-chromatography using epitope-specific immunogen.
Isotype	IgG
Alias	KCNJ16; Inward rectifier potassium channel 16; Inward rectifier K(+) channel Kir5.1; Potassium channel; inwardly rectifying subfamily J member 16
Immunogen Species	Homo sapiens (Human)
Target Names	KCNJ16

Image



Western Blot analysis of HeLa cells using KIR5.1 Polyclonal Antibody

Usage For Research Use Only. Not for use in diagnostic or therapeutic procedures.