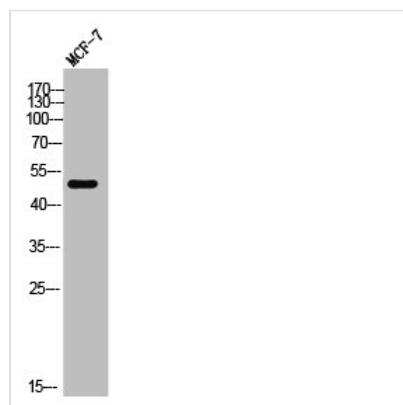




KCNG3 Antibody

Product Code	CSB-PA007789
Storage	Upon receipt, store at -20°C or -80°C. Avoid repeated freeze.
Uniprot No.	Q8TAE7
Immunogen	Synthesized peptide derived from the Internal region of Human KCNG3.
Raised In	Rabbit
Species Reactivity	Human, Mouse, Rat
Tested Applications	WB, ELISA; WB:1:500-1:2000, ELISA:1:5000
Form	Liquid
Conjugate	Non-conjugated
Storage Buffer	Liquid in PBS containing 50% glycerol, 0.5% BSA and 0.02% sodium azide.
Purification Method	The antibody was affinity-purified from rabbit antiserum by affinity-chromatography using epitope-specific immunogen.
Isotype	IgG
Alias	KCNG3; Potassium voltage-gated channel subfamily G member 3; Voltage-gated potassium channel subunit Kv10.1; Voltage-gated potassium channel subunit Kv6.3
Immunogen Species	Homo sapiens (Human)
Target Names	KCNG3

Image



Western Blot analysis of MCF-7 cells using KCNG3 Polyclonal Antibody

Usage For Research Use Only. Not for use in diagnostic or therapeutic procedures.