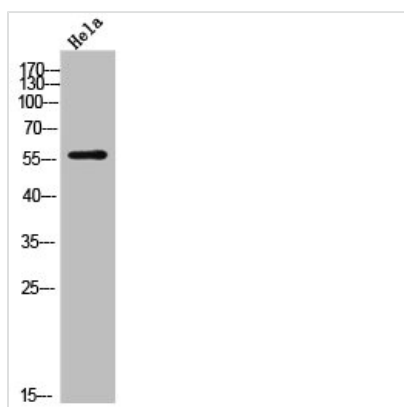




DKC1 Antibody

Product Code	CSB-PA007802
Storage	Upon receipt, store at -20°C or -80°C. Avoid repeated freeze.
Uniprot No.	O60832
Immunogen	Synthesized peptide derived from the Internal region of Human Dyskerin.
Raised In	Rabbit
Species Reactivity	Human, Mouse, Rat
Tested Applications	WB, IHC, IF, ELISA; WB:1:500-1:2000, IHC:1:100-1:300, IF:1:200-1:1000, ELISA:1:40000
Form	Liquid
Conjugate	Non-conjugated
Storage Buffer	Liquid in PBS containing 50% glycerol, 0.5% BSA and 0.02% sodium azide.
Purification Method	The antibody was affinity-purified from rabbit antiserum by affinity-chromatography using epitope-specific immunogen.
Isotype	IgG
Alias	DKC1; NOLA4; H/ACA ribonucleoprotein complex subunit 4; CBF5 homolog; Dyskerin; Nopp140-associated protein of 57 kDa; Nucleolar protein NAP57; Nucleolar protein family A member 4; snoRNP protein DKC1
Immunogen Species	Homo sapiens (Human)
Target Names	DKC1

Image



Western Blot analysis of HeLa cells using Dyskerin Polyclonal Antibody

Usage For Research Use Only. Not for use in diagnostic or therapeutic procedures.