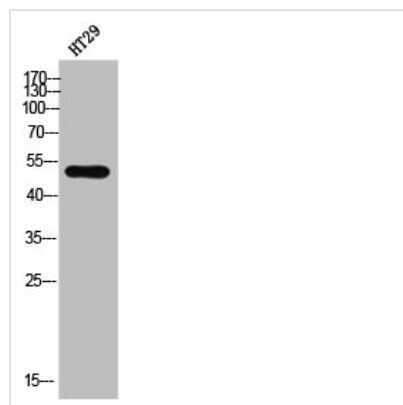




DPYSL2 Antibody

Product Code	CSB-PA007822
Storage	Upon receipt, store at -20°C or -80°C. Avoid repeated freeze.
Uniprot No.	Q16555
Immunogen	Synthesized peptide derived from Human CRMP-2 around the non-phosphorylation site of T509.
Raised In	Rabbit
Species Reactivity	Human,Mouse,Rat
Tested Applications	WB, IHC, ELISA; WB:1:500-1:2000, IHC:1:100-1:300, ELISA:1:20000
Form	Liquid
Conjugate	Non-conjugated
Storage Buffer	Liquid in PBS containing 50% glycerol, 0.5% BSA and 0.02% sodium azide.
Purification Method	The antibody was affinity-purified from rabbit antiserum by affinity-chromatography using epitope-specific immunogen.
Isotype	IgG
Alias	DPYSL2; CRMP2; ULIP2; Dihydropyrimidinase-related protein 2; DRP-2; Collapsin response mediator protein 2; CRMP-2; N2A3; Unc-33-like phosphoprotein 2; ULIP-2
Immunogen Species	Homo sapiens (Human)
Target Names	DPYSL2

Image



Western Blot analysis of HT-29 cells using CRMP-2 Polyclonal Antibody

Usage For Research Use Only. Not for use in diagnostic or therapeutic procedures.