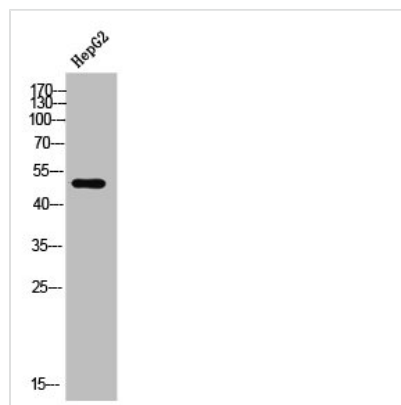




DRD1 Antibody

Product Code	CSB-PA007829
Storage	Upon receipt, store at -20°C or -80°C. Avoid repeated freeze.
Uniprot No.	P21728
Immunogen	Synthesized peptide derived from the Internal region of Human D1DR.
Raised In	Rabbit
Species Reactivity	Human, Mouse, Rat
Tested Applications	WB, IHC, IF, ELISA; WB:1:500-1:2000, IHC:1:100-1:300, IF:1:200-1:1000, ELISA:1:5000
Form	Liquid
Conjugate	Non-conjugated
Storage Buffer	Liquid in PBS containing 50% glycerol, 0.5% BSA and 0.02% sodium azide.
Purification Method	The antibody was affinity-purified from rabbit antiserum by affinity-chromatography using epitope-specific immunogen.
Isotype	IgG
Alias	DRD1; D(1A) dopamine receptor; Dopamine D1 receptor
Immunogen Species	Homo sapiens (Human)
Target Names	DRD1

Image



Western Blot analysis of HepG2 cells using D1DR Polyclonal Antibody

Usage

For Research Use Only. Not for use in diagnostic or therapeutic procedures.