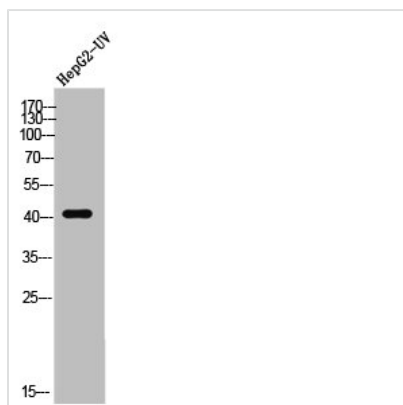




DUSP6 Antibody

Product Code	CSB-PA007843
Storage	Upon receipt, store at -20°C or -80°C. Avoid repeated freeze.
Uniprot No.	Q16828
Immunogen	Synthesized peptide derived from the Internal region of Human MKP-3.
Raised In	Rabbit
Species Reactivity	Human,Mouse,Rat
Tested Applications	WB, IHC, IF, ELISA; WB:1:500-1:2000, IHC:1:100-1:300, IF:1:200-1:1000, ELISA:1:20000
Form	Liquid
Conjugate	Non-conjugated
Storage Buffer	Liquid in PBS containing 50% glycerol, 0.5% BSA and 0.02% sodium azide.
Purification Method	The antibody was affinity-purified from rabbit antiserum by affinity-chromatography using epitope-specific immunogen.
Isotype	IgG
Alias	DUSP6; MKP3; PYST1; Dual specificity protein phosphatase 6; Dual specificity protein phosphatase PYST1; Mitogen-activated protein kinase phosphatase 3; MAP kinase phosphatase 3; MKP-3
Immunogen Species	Homo sapiens (Human)
Target Names	DUSP6

Image



Western Blot analysis of HEPG2-UV cells using MKP-3 Polyclonal Antibody