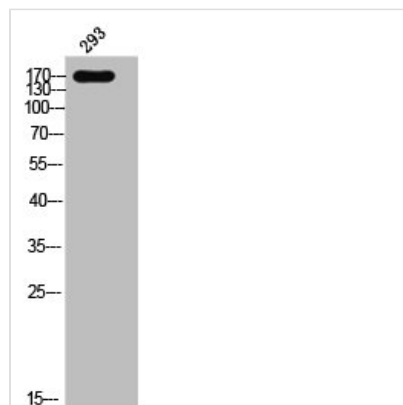




Phospho-EGFR (Y1069) Antibody

Product Code	CSB-PA007953
Storage	Upon receipt, store at -20°C or -80°C. Avoid repeated freeze.
Uniprot No.	P00533
Immunogen	Synthesized peptide derived from Human EGFR around the phosphorylation site of Y1069.
Raised In	Rabbit
Species Reactivity	Human,Mouse,Rat,Monkey
Tested Applications	WB, ELISA; WB:1:500-1:2000, ELISA:1:20000
Form	Liquid
Conjugate	Non-conjugated
Storage Buffer	Liquid in PBS containing 50% glycerol, 0.5% BSA and 0.02% sodium azide.
Purification Method	The antibody was affinity-purified from rabbit antiserum by affinity-chromatography using epitope-specific immunogen.
Isotype	IgG
Alias	EGFR; ERBB; ERBB1; HER1; Epidermal growth factor receptor; Proto-oncogene c-ErbB-1; Receptor tyrosine-protein kinase erbB-1
Immunogen Species	Homo sapiens (Human)
Target Names	EGFR

Image



Western Blot analysis of 293 cells using Phospho-EGFR (Y1069) Polyclonal Antibody

Usage For Research Use Only. Not for use in diagnostic or therapeutic procedures.