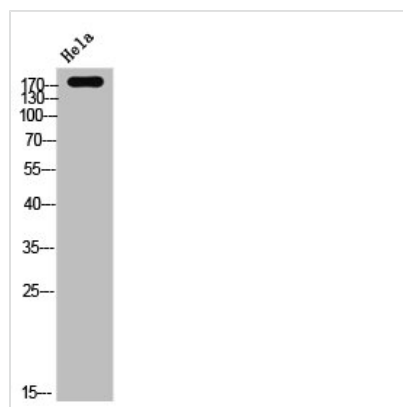




Phospho-EGFR (Y1016) Antibody

Product Code	CSB-PA007969
Storage	Upon receipt, store at -20°C or -80°C. Avoid repeated freeze.
Uniprot No.	P00533
Immunogen	Synthesized peptide derived from Human EGFR around the phosphorylation site of Y1016.
Raised In	Rabbit
Species Reactivity	Human, Mouse, Rat
Tested Applications	WB, IHC, IF, ELISA; WB:1:500-1:2000, IHC:1:100-1:300, IF:1:200-1:1000, ELISA:1:5000
Form	Liquid
Conjugate	Non-conjugated
Storage Buffer	Liquid in PBS containing 50% glycerol, 0.5% BSA and 0.02% sodium azide.
Purification Method	The antibody was affinity-purified from rabbit antiserum by affinity-chromatography using epitope-specific immunogen.
Isotype	IgG
Alias	EGFR; ERBB; ERBB1; HER1; Epidermal growth factor receptor; Proto-oncogene c-ErbB-1; Receptor tyrosine-protein kinase erbB-1
Immunogen Species	Homo sapiens (Human)
Target Names	EGFR

Image



Western Blot analysis of HELA cells using Phospho-EGFR (Y1016) Polyclonal Antibody

Usage For Research Use Only. Not for use in diagnostic or therapeutic procedures.