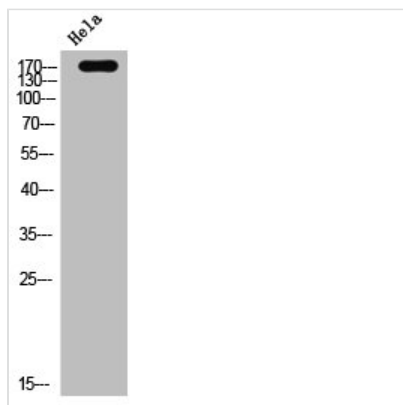




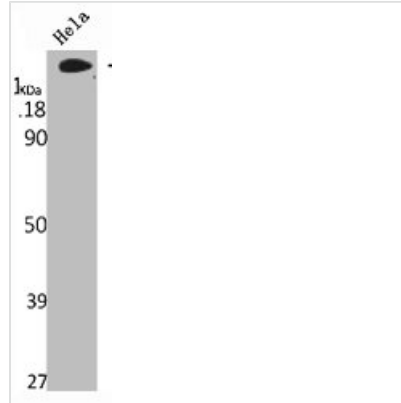
EGFR Antibody

| | |
|----------------------------|---|
| Product Code | CSB-PA007978 |
| Storage | Upon receipt, store at -20°C or -80°C. Avoid repeated freeze. |
| Uniprot No. | P00533 |
| Immunogen | Synthesized peptide derived from Human EGFR around the non-phosphorylation site of Y998. |
| Raised In | Rabbit |
| Species Reactivity | Human, Mouse, Rat |
| Tested Applications | WB, ELISA; WB:1:500-1:2000, ELISA:1:10000 |
| Form | Liquid |
| Conjugate | Non-conjugated |
| Storage Buffer | Liquid in PBS containing 50% glycerol, 0.5% BSA and 0.02% sodium azide. |
| Purification Method | The antibody was affinity-purified from rabbit antiserum by affinity-chromatography using epitope-specific immunogen. |
| Isotype | IgG |
| Alias | EGFR; ERBB; ERBB1; HER1; Epidermal growth factor receptor; Proto-oncogene c-ErbB-1; Receptor tyrosine-protein kinase erbB-1 |
| Immunogen Species | Homo sapiens (Human) |
| Target Names | EGFR |

Image



Western Blot analysis of hela cells using EGFR Polyclonal Antibody



Western Blot analysis of HELA cells using EGFR Polyclonal Antibody

Usage

For Research Use Only. Not for use in diagnostic or therapeutic procedures.