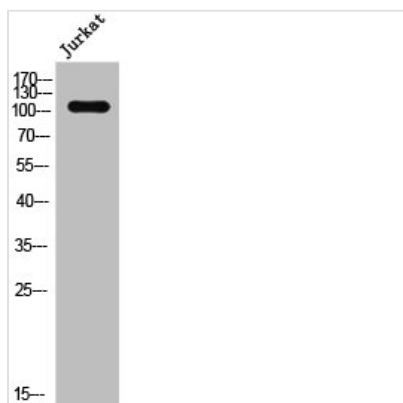




Phospho-EPHA2/EPHA5 (Y594) Antibody

Product Code	CSB-PA007985
Storage	Upon receipt, store at -20°C or -80°C. Avoid repeated freeze.
Uniprot No.	P29317/P54756
Immunogen	Synthesized peptide derived from Human EphA2/5 around the phosphorylation site of Y594.
Raised In	Rabbit
Species Reactivity	Human, Mouse
Tested Applications	WB, ELISA; WB:1:500-1:2000, ELISA:1:10000
Form	Liquid
Conjugate	Non-conjugated
Storage Buffer	Liquid in PBS containing 50% glycerol, 0.5% BSA and 0.02% sodium azide.
Purification Method	The antibody was affinity-purified from rabbit antiserum by affinity-chromatography using epitope-specific immunogen.
Isotype	IgG
Alias	EPHA2; ECK; Ephrin type-A receptor 2; Epithelial cell kinase; Tyrosine-protein kinase receptor ECK; EPHA5; BSK; EHK1; HEK7; TYRO4; Ephrin type-A receptor 5; Brain-specific kinase; EPH homology kinase 1; EHK-1; EPH-like kinase 7; EK7; hEK7
Immunogen Species	Homo sapiens (Human)
Target Names	EPHA2/EPHA5

Image



Western Blot analysis of JK cells using Phospho-EphA2/5 (Y594) Polyclonal Antibody

Usage

For Research Use Only. Not for use in diagnostic or therapeutic procedures.