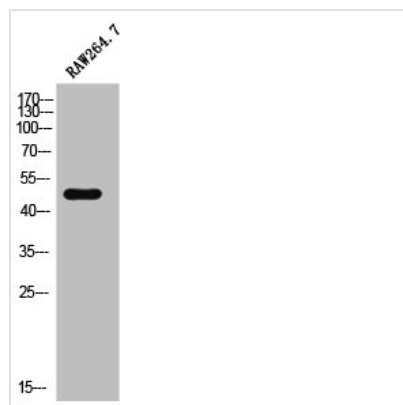




CADM4 Antibody

Product Code	CSB-PA008004
Storage	Upon receipt, store at -20°C or -80°C. Avoid repeated freeze.
Uniprot No.	Q8NFZ8
Immunogen	Synthesized peptide derived from the C-terminal region of Human IGSF4C.
Raised In	Rabbit
Species Reactivity	Human,Mouse,Rat
Tested Applications	WB, IHC, IF, ELISA; WB:1:500-1:2000, IHC:1:100-1:300, IF:1:200-1:1000, ELISA:1:20000
Form	Liquid
Conjugate	Non-conjugated
Storage Buffer	Liquid in PBS containing 50% glycerol, 0.5% BSA and 0.02% sodium azide.
Purification Method	The antibody was affinity-purified from rabbit antiserum by affinity-chromatography using epitope-specific immunogen.
Isotype	IgG
Alias	CADM4; IGSF4C; NECL4; TSLL2; Cell adhesion molecule 4; Immunoglobulin superfamily member 4C; IgSF4C; Nectin-like protein 4; NECL-4; TSLC1-like protein 2
Immunogen Species	Homo sapiens (Human)
Target Names	CADM4

Image



Western Blot analysis of RAW264.7 cells using IGSF4C Polyclonal Antibody