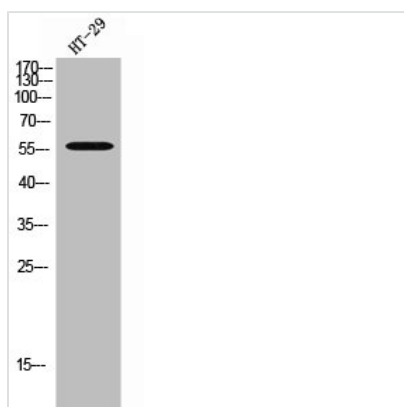




# APLF Antibody

<b>Product Code</b>	CSB-PA008030
<b>Storage</b>	Upon receipt, store at -20°C or -80°C. Avoid repeated freeze.
<b>Uniprot No.</b>	Q8IW19
<b>Immunogen</b>	Synthesized peptide derived from Human APLF around the non-phosphorylation site of S116.
<b>Raised In</b>	Rabbit
<b>Species Reactivity</b>	Human, Mouse
<b>Tested Applications</b>	WB, IHC, ELISA; WB:1:500-1:2000, IHC:1:100-1:300, ELISA:1:40000
<b>Form</b>	Liquid
<b>Conjugate</b>	Non-conjugated
<b>Storage Buffer</b>	Liquid in PBS containing 50% glycerol, 0.5% BSA and 0.02% sodium azide.
<b>Purification Method</b>	The antibody was affinity-purified from rabbit antiserum by affinity-chromatography using epitope-specific immunogen.
<b>Isotype</b>	IgG
<b>Alias</b>	APLF; C2orf13; PALF; XIP1; Aprataxin and PNK-like factor; Apurinic-apyrimidinic endonuclease APLF; PNK and APTX-like FHA domain-containing protein; XRCC1-interacting protein 1
<b>Immunogen Species</b>	Homo sapiens (Human)
<b>Target Names</b>	APLF

## Image



Western Blot analysis of HT-29 cells using APLF Polyclonal Antibody

## Usage

For Research Use Only. Not for use in diagnostic or therapeutic procedures.