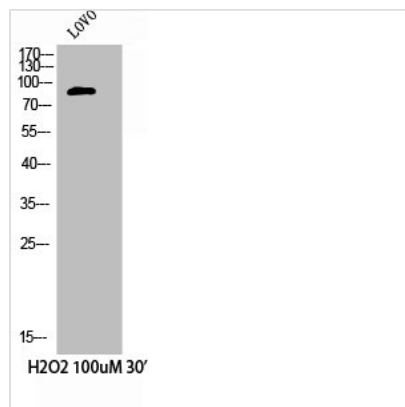




Phospho-CTTN (Y421) Antibody

Product Code	CSB-PA008042
Storage	Upon receipt, store at -20°C or -80°C. Avoid repeated freeze.
Uniprot No.	Q14247
Immunogen	Synthesized peptide derived from Human Cortactin around the phosphorylation site of Y421.
Raised In	Rabbit
Species Reactivity	Human,Mouse,Rat
Tested Applications	WB, IHC, ELISA; WB:1:500-1:2000, IHC:1:100-1:300, ELISA:1:20000
Form	Liquid
Conjugate	Non-conjugated
Storage Buffer	Liquid in PBS containing 50% glycerol, 0.5% BSA and 0.02% sodium azide.
Purification Method	The antibody was affinity-purified from rabbit antiserum by affinity-chromatography using epitope-specific immunogen.
Isotype	IgG
Alias	CTTN; EMS1; Src substrate cortactin; Amplexin; Oncogene EMS1
Immunogen Species	Homo sapiens (Human)
Target Names	CTTN

Image



Western Blot analysis of LOVO+H2O2 cells using Phospho-Cortactin (Y421) Polyclonal Antibody