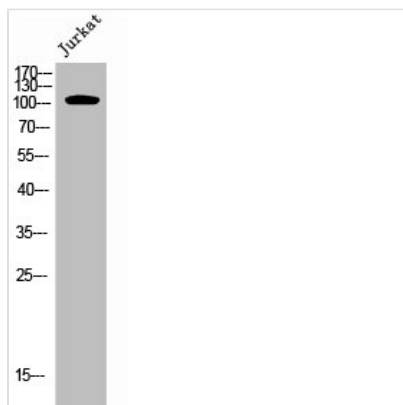




Phospho-EPHA7 (Y791) Antibody

Product Code	CSB-PA008063
Storage	Upon receipt, store at -20°C or -80°C. Avoid repeated freeze.
Uniprot No.	Q15375
Immunogen	Synthesized peptide derived from Human EphA7 around the phosphorylation site of Y791.
Raised In	Rabbit
Species Reactivity	Human,Mouse,Rat
Tested Applications	WB, ELISA; WB:1:500-1:2000, ELISA:1:10000
Form	Liquid
Conjugate	Non-conjugated
Storage Buffer	Liquid in PBS containing 50% glycerol, 0.5% BSA and 0.02% sodium azide.
Purification Method	The antibody was affinity-purified from rabbit antiserum by affinity-chromatography using epitope-specific immunogen.
Isotype	IgG
Alias	EPHA7; EHK3; HEK11; Ephrin type-A receptor 7; EPH homology kinase 3; EHK-3; EPH-like kinase 11; EK11; hEK11
Immunogen Species	Homo sapiens (Human)
Target Names	EPHA7

Image



Western Blot analysis of JK cells using Phospho-EphA7 (Y791) Polyclonal Antibody

Usage For Research Use Only. Not for use in diagnostic or therapeutic procedures.