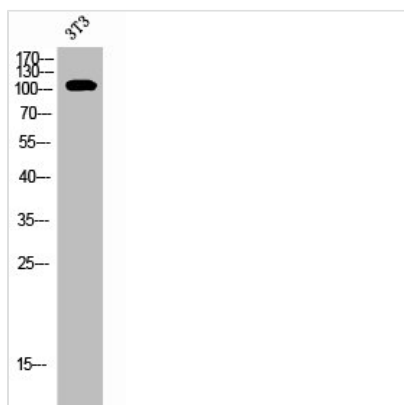




EPHB1/EPHB2/EPHB3/EPHB4 Antibody

Product Code	CSB-PA008069
Storage	Upon receipt, store at -20°C or -80°C. Avoid repeated freeze.
Uniprot No.	P54762/P29323/P54753/P54760
Immunogen	Synthesized peptide derived from Human EphB1/2/3/4 around the non-phosphorylation site of Y600/602/614/596.
Raised In	Rabbit
Species Reactivity	Human, Mouse
Tested Applications	WB, IHC, ELISA; WB:1:500-1:2000, IHC:1:100-1:300, ELISA:1:10000
Form	Liquid
Conjugate	Non-conjugated
Storage Buffer	Liquid in PBS containing 50% glycerol, 0.5% BSA and 0.02% sodium azide.
Purification Method	The antibody was affinity-purified from rabbit antiserum by affinity-chromatography using epitope-specific immunogen.
Isotype	IgG
Alias	EPHB1; ELK; EPHT2; HEK6; NET; Ephrin type-B receptor 1; ELK; EPH tyrosine kinase 2; EPH-like kinase 6; EK6; hEK6; Neuronally-expressed EPH-related tyrosine kinase; NET; Tyrosine-protein kinase receptor EPH-2; EPHB2; DRT; EPHT3; EPTH3; ERK;
Immunogen Species	Homo sapiens (Human)
Target Names	EPHB1/EPHB2/EPHB3/EPHB4

Image



Western Blot analysis of 3T3 cells using EphB1/2/3/4 Polyclonal Antibody

Usage

For Research Use Only. Not for use in diagnostic or therapeutic procedures.