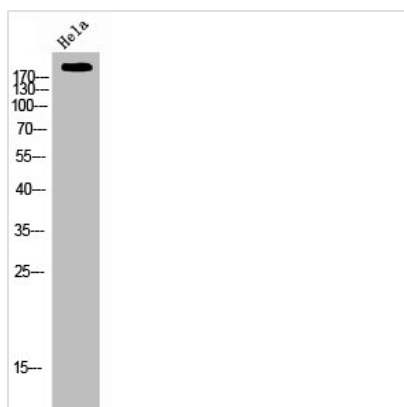




Phospho-ERBB3 (Y1289) Antibody

Product Code	CSB-PA008102
Storage	Upon receipt, store at -20°C or -80°C. Avoid repeated freeze.
Uniprot No.	P21860
Immunogen	Synthesized peptide derived from Human ErbB-3 around the phosphorylation site of Y1289.
Raised In	Rabbit
Species Reactivity	Human,Mouse,Rat
Tested Applications	WB, IHC, IF, ELISA; WB:1:500-1:2000, IHC:1:100-1:300, IF:1:200-1:1000, ELISA:1:10000
Form	Liquid
Conjugate	Non-conjugated
Storage Buffer	Liquid in PBS containing 50% glycerol, 0.5% BSA and 0.02% sodium azide.
Purification Method	The antibody was affinity-purified from rabbit antiserum by affinity-chromatography using epitope-specific immunogen.
Isotype	IgG
Alias	ERBB3; HER3; Receptor tyrosine-protein kinase erbB-3; Proto-oncogene-like protein c-ErbB-3; Tyrosine kinase-type cell surface receptor HER3
Immunogen Species	Homo sapiens (Human)
Target Names	ERBB3

Image



Western Blot analysis of HeLa cells using Phospho-ErbB-3 (Y1289) Polyclonal Antibody

Usage For Research Use Only. Not for use in diagnostic or therapeutic procedures.