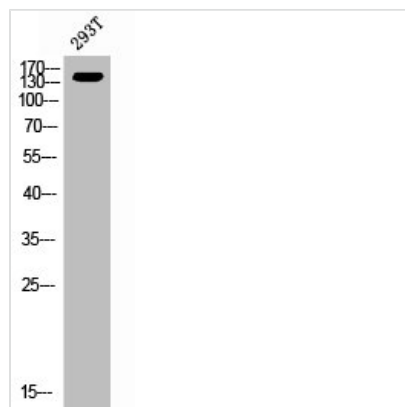




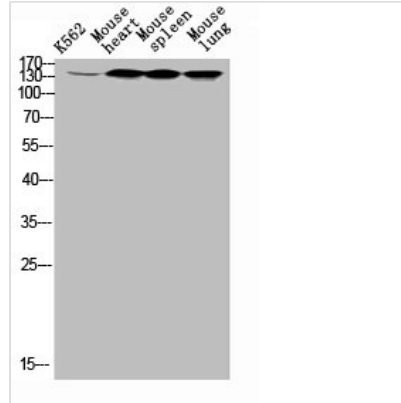
ERBB3 Antibody

Product Code	CSB-PA008110
Storage	Upon receipt, store at -20°C or -80°C. Avoid repeated freeze.
Uniprot No.	P21860
Immunogen	Synthesized peptide derived from the N-terminal region of Human ErbB-3.
Raised In	Rabbit
Species Reactivity	Human
Tested Applications	WB, IHC, ELISA; WB:1:500-1:2000, IHC:1:100-1:300, ELISA:1:20000
Form	Liquid
Conjugate	Non-conjugated
Storage Buffer	Liquid in PBS containing 50% glycerol, 0.5% BSA and 0.02% sodium azide.
Purification Method	The antibody was affinity-purified from rabbit antiserum by affinity-chromatography using epitope-specific immunogen.
Isotype	IgG
Alias	ERBB3; HER3; Receptor tyrosine-protein kinase erbB-3; Proto-oncogene-like protein c-ErbB-3; Tyrosine kinase-type cell surface receptor HER3
Immunogen Species	Homo sapiens (Human)
Target Names	ERBB3

Image



Western Blot analysis of 293T cells using ErbB-3 Polyclonal Antibody



Western Blot analysis of k562 mouse-heart mouse-spleen mouse-lung cells using ErbB-3 Polyclonal Antibody

Usage

For Research Use Only. Not for use in diagnostic or therapeutic procedures.