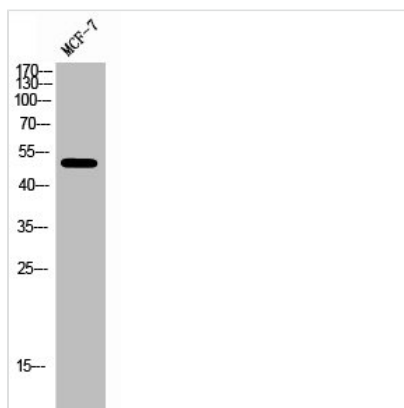




ESR2 Antibody

Product Code	CSB-PA008151
Storage	Upon receipt, store at -20°C or -80°C. Avoid repeated freeze.
Uniprot No.	Q92731
Immunogen	Synthesized peptide derived from Human ER β around the non-phosphorylation site of S87.
Raised In	Rabbit
Species Reactivity	Human
Tested Applications	WB, IHC, ELISA; WB:1:500-1:2000, IHC:1:100-1:300, ELISA:1:10000
Form	Liquid
Conjugate	Non-conjugated
Storage Buffer	Liquid in PBS containing 50% glycerol, 0.5% BSA and 0.02% sodium azide.
Purification Method	The antibody was affinity-purified from rabbit antiserum by affinity-chromatography using epitope-specific immunogen.
Isotype	IgG
Alias	ESR2; ESTRB; NR3A2; Estrogen receptor beta; ER-beta; Nuclear receptor subfamily 3 group A member 2
Immunogen Species	Homo sapiens (Human)
Target Names	ESR2

Image



Western Blot analysis of MCF-7 cells using ER β Polyclonal Antibody

Usage For Research Use Only. Not for use in diagnostic or therapeutic procedures.