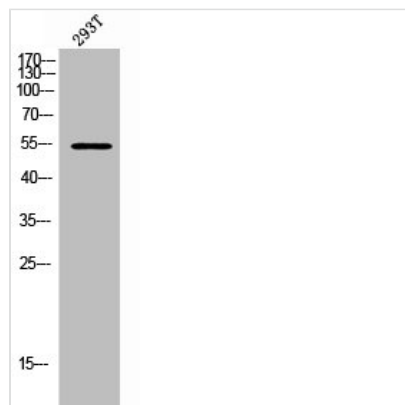




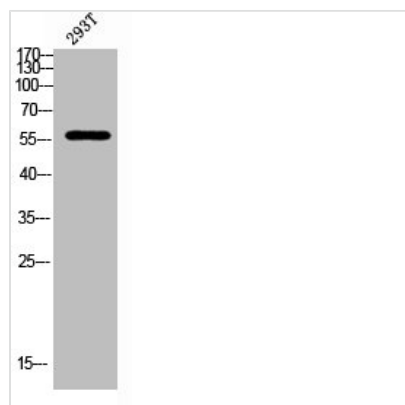
ETS1 Antibody

Product Code	CSB-PA008154
Storage	Upon receipt, store at -20°C or -80°C. Avoid repeated freeze.
Uniprot No.	P14921
Immunogen	Synthesized peptide derived from Human Ets-1 around the non-phosphorylation site of T38.
Raised In	Rabbit
Species Reactivity	Human,Mouse,Rat
Tested Applications	WB, IHC, IF, ELISA; WB:1:500-1:2000, IHC:1:100-1:300, IF:1:200-1:1000, ELISA:1:5000
Form	Liquid
Conjugate	Non-conjugated
Storage Buffer	Liquid in PBS containing 50% glycerol, 0.5% BSA and 0.02% sodium azide.
Purification Method	The antibody was affinity-purified from rabbit antiserum by affinity-chromatography using epitope-specific immunogen.
Isotype	IgG
Alias	ETS1; EWSR2; Protein C-ets-1; p54
Immunogen Species	Homo sapiens (Human)
Target Names	ETS1

Image



Western Blot analysis of 293T cells using ETS1 Polyclonal Antibody



Western Blot analysis of 293T cells using ETS1
Polyclonal Antibody