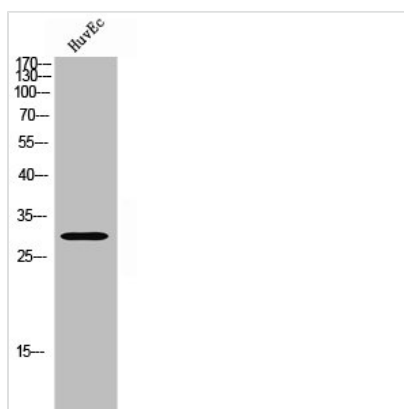




MTIF3 Antibody

Product Code	CSB-PA008192
Storage	Upon receipt, store at -20°C or -80°C. Avoid repeated freeze.
Uniprot No.	Q9H2K0
Immunogen	Synthesized peptide derived from the Internal region of Human IF3.
Raised In	Rabbit
Species Reactivity	Human
Tested Applications	WB, IHC, ELISA; WB:1:500-1:2000, IHC:1:100-1:300, ELISA:1:40000
Form	Liquid
Conjugate	Non-conjugated
Storage Buffer	Liquid in PBS containing 50% glycerol, 0.5% BSA and 0.02% sodium azide.
Purification Method	The antibody was affinity-purified from rabbit antiserum by affinity-chromatography using epitope-specific immunogen.
Isotype	IgG
Alias	MTIF3; DC38; Translation initiation factor IF-3; mitochondrial; IF-3(Mt); IF-3Mt; IF3(mt); IF3mt
Immunogen Species	Homo sapiens (Human)
Target Names	MTIF3

Image



Western Blot analysis of HuvEC cells using IF3 Polyclonal Antibody

Usage

For Research Use Only. Not for use in diagnostic or therapeutic procedures.