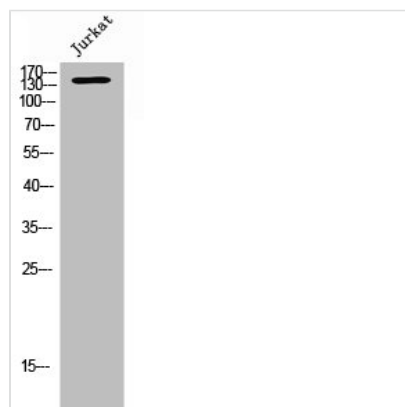




SCAF8 Antibody

| | |
|----------------------------|--|
| Product Code | CSB-PA008259 |
| Storage | Upon receipt, store at -20°C or -80°C. Avoid repeated freeze. |
| Uniprot No. | Q9UPN6 |
| Immunogen | Synthesized peptide derived from the Internal region of Human RBM16. |
| Raised In | Rabbit |
| Species Reactivity | Human,Mouse,Rat |
| Tested Applications | WB, ELISA; WB:1:500-1:2000, ELISA:1:10000 |
| Form | Liquid |
| Conjugate | Non-conjugated |
| Storage Buffer | Liquid in PBS containing 50% glycerol, 0.5% BSA and 0.02% sodium azide. |
| Purification Method | The antibody was affinity-purified from rabbit antiserum by affinity-chromatography using epitope-specific immunogen. |
| Isotype | IgG |
| Alias | SCAF8; CCAP7; KIAA1116; RBM16; Protein SCAF8; CDC5L complex-associated protein 7; RNA-binding motif protein 16; SR-related and CTD-associated factor 8 |
| Immunogen Species | Homo sapiens (Human) |
| Target Names | SCAF8 |

Image



Western Blot analysis of JK cells using RBM16 Polyclonal Antibody