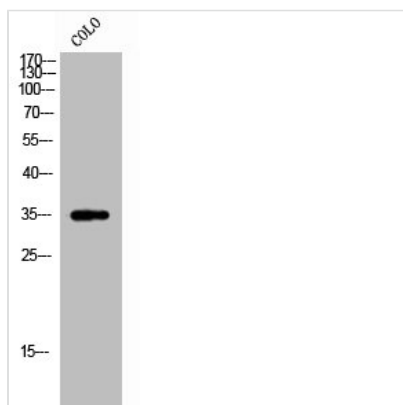




RALY Antibody

Product Code	CSB-PA008276
Storage	Upon receipt, store at -20°C or -80°C. Avoid repeated freeze.
Uniprot No.	Q9UKM9
Immunogen	Synthesized peptide derived from the Internal region of Human Raly.
Raised In	Rabbit
Species Reactivity	Human,Mouse,Rat
Tested Applications	WB, ELISA; WB:1:500-1:2000, ELISA:1:10000
Form	Liquid
Conjugate	Non-conjugated
Storage Buffer	Liquid in PBS containing 50% glycerol, 0.5% BSA and 0.02% sodium azide.
Purification Method	The antibody was affinity-purified from rabbit antiserum by affinity-chromatography using epitope-specific immunogen.
Isotype	IgG
Alias	RALY; HNRPCL2; P542; RNA-binding protein Raly; Autoantigen p542; Heterogeneous nuclear ribonucleoprotein C-like 2; hnRNP core protein C-like 2; hnRNP associated with lethal yellow protein homolog
Immunogen Species	Homo sapiens (Human)
Target Names	RALY

Image



Western Blot analysis of CoLo cells using Raly Polyclonal Antibody

Usage

For Research Use Only. Not for use in diagnostic or therapeutic procedures.