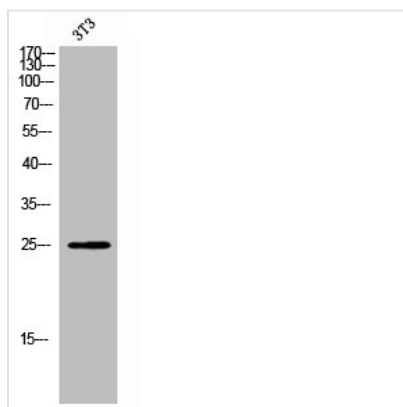




KLRK1 Antibody

Product Code	CSB-PA008277
Storage	Upon receipt, store at -20°C or -80°C. Avoid repeated freeze.
Uniprot No.	P26718
Immunogen	Synthesized peptide derived from the Internal region of Human CD314.
Raised In	Rabbit
Species Reactivity	Human
Tested Applications	WB, ELISA; WB:1:500-1:2000, ELISA:1:10000
Form	Liquid
Conjugate	Non-conjugated
Storage Buffer	Liquid in PBS containing 50% glycerol, 0.5% BSA and 0.02% sodium azide.
Purification Method	The antibody was affinity-purified from rabbit antiserum by affinity-chromatography using epitope-specific immunogen.
Isotype	IgG
Alias	KLRK1; D12S2489E; NKG2D; NKG2-D type II integral membrane protein; Killer cell lectin-like receptor subfamily K member 1; NK cell receptor D; NKG2-D-activating NK receptor; CD antigen CD314
Immunogen Species	Homo sapiens (Human)
Target Names	KLRK1

Image



Western Blot analysis of 3T3 cells using CD314 Polyclonal Antibody

Usage

For Research Use Only. Not for use in diagnostic or therapeutic procedures.