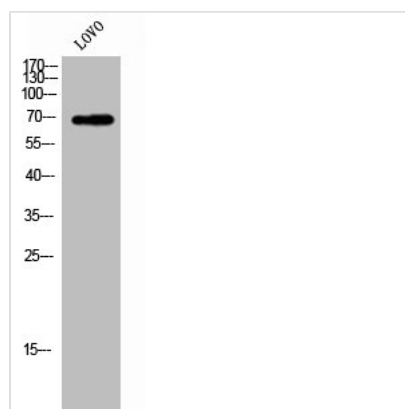




ZP1 Antibody

Product Code	CSB-PA008280
Storage	Upon receipt, store at -20°C or -80°C. Avoid repeated freeze.
Uniprot No.	P60852
Immunogen	Synthesized peptide derived from the Internal region of Human ZP1.
Raised In	Rabbit
Species Reactivity	Human
Tested Applications	WB, IHC, ELISA; WB:1:500-1:2000, IHC:1:100-1:300, ELISA:1:10000
Form	Liquid
Conjugate	Non-conjugated
Storage Buffer	Liquid in PBS containing 50% glycerol, 0.5% BSA and 0.02% sodium azide.
Purification Method	The antibody was affinity-purified from rabbit antiserum by affinity-chromatography using epitope-specific immunogen.
Isotype	IgG
Alias	ZP1; Zona pellucida sperm-binding protein 1; Zona pellucida glycoprotein 1; Zp-1
Immunogen Species	Homo sapiens (Human)
Target Names	ZP1

Image



Western Blot analysis of LOVO cells using ZP1 Polyclonal Antibody

Usage

For Research Use Only. Not for use in diagnostic or therapeutic procedures.