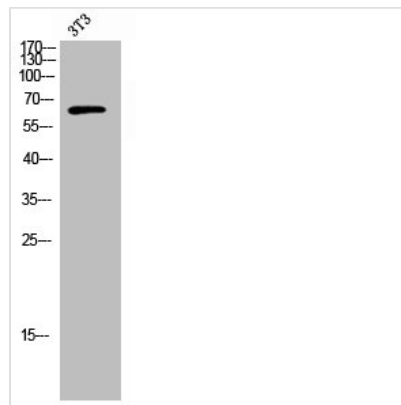




RFTN1 Antibody

Product Code	CSB-PA008331
Storage	Upon receipt, store at -20°C or -80°C. Avoid repeated freeze.
Uniprot No.	Q14699
Immunogen	Synthesized peptide derived from the C-terminal region of Human Raftlin.
Raised In	Rabbit
Species Reactivity	Human
Tested Applications	WB, ELISA; WB:1:500-1:2000, ELISA:1:20000
Form	Liquid
Conjugate	Non-conjugated
Storage Buffer	Liquid in PBS containing 50% glycerol, 0.5% BSA and 0.02% sodium azide.
Purification Method	The antibody was affinity-purified from rabbit antiserum by affinity-chromatography using epitope-specific immunogen.
Isotype	IgG
Alias	RFTN1; KIAA0084; MIG2; Raftlin; Cell migration-inducing gene 2 protein; Raft-linking protein
Immunogen Species	Homo sapiens (Human)
Target Names	RFTN1

Image



Western Blot analysis of 3T3 cells using Raftlin Polyclonal Antibody

Usage

For Research Use Only. Not for use in diagnostic or therapeutic procedures.