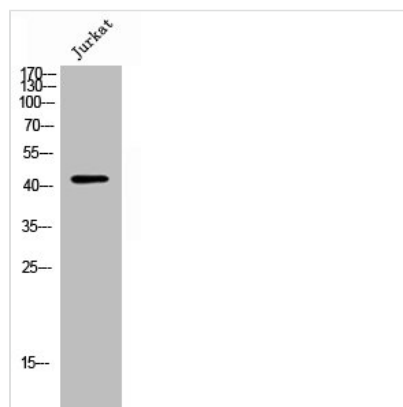




ATG4B Antibody

Product Code	CSB-PA008332
Storage	Upon receipt, store at -20°C or -80°C. Avoid repeated freeze.
Uniprot No.	Q9Y4P1
Immunogen	Synthesized peptide derived from the Internal region of Human Atg4b.
Raised In	Rabbit
Species Reactivity	Human, Mouse
Tested Applications	WB, IHC, ELISA; WB:1:500-1:2000, IHC:1:100-1:300, ELISA:1:20000
Form	Liquid
Conjugate	Non-conjugated
Storage Buffer	Liquid in PBS containing 50% glycerol, 0.5% BSA and 0.02% sodium azide.
Purification Method	The antibody was affinity-purified from rabbit antiserum by affinity-chromatography using epitope-specific immunogen.
Isotype	IgG
Alias	ATG4B; APG4B; AUTL1; KIAA0943; Cysteine protease ATG4B; AUT-like 1 cysteine endopeptidase; Autophagin-1; Autophagy-related cysteine endopeptidase 1; Autophagy-related protein 4 homolog B; hAPG4B
Immunogen Species	Homo sapiens (Human)
Target Names	ATG4B

Image



Western Blot analysis of Jurkat cells using Atg4b Polyclonal Antibody

Usage For Research Use Only. Not for use in diagnostic or therapeutic procedures.