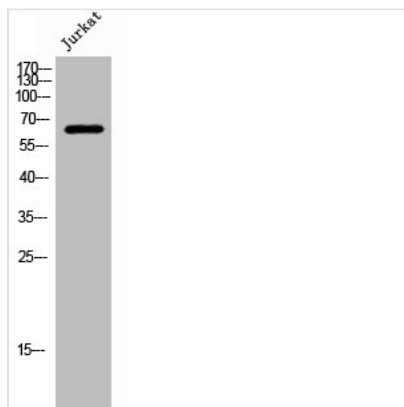




SLC9A8 Antibody

Product Code	CSB-PA008354
Storage	Upon receipt, store at -20°C or -80°C. Avoid repeated freeze.
Uniprot No.	Q9Y2E8
Immunogen	Synthesized peptide derived from the C-terminal region of Human NHE-8.
Raised In	Rabbit
Species Reactivity	Human, Mouse, Rat
Tested Applications	WB, IHC, ELISA; WB:1:500-1:2000, IHC:1:100-1:300, IHC:1:200-1:1000, ELISA:1:40000
Form	Liquid
Conjugate	Non-conjugated
Storage Buffer	Liquid in PBS containing 50% glycerol, 0.5% BSA and 0.02% sodium azide.
Purification Method	The antibody was affinity-purified from rabbit antiserum by affinity-chromatography using epitope-specific immunogen.
Isotype	IgG
Alias	SLC9A8; KIAA0939; NHE8; Sodium/hydrogen exchanger 8; Na(+)/H(+) exchanger 8; NHE-8; Solute carrier family 9 member 8
Immunogen Species	Homo sapiens (Human)
Target Names	SLC9A8

Image



Western Blot analysis of Jurkat cells using NHE-8 Polyclonal Antibody

Usage

For Research Use Only. Not for use in diagnostic or therapeutic procedures.