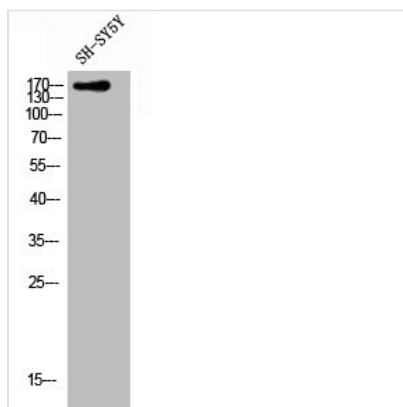




CLASP1 Antibody

Product Code	CSB-PA008355
Storage	Upon receipt, store at -20°C or -80°C. Avoid repeated freeze.
Uniprot No.	Q7Z460
Immunogen	Synthesized peptide derived from the C-terminal region of Human CLASP1.
Raised In	Rabbit
Species Reactivity	Human, Mouse
Tested Applications	WB, IHC, ELISA; WB:1:500-1:2000, IHC:1:100-1:300, ELISA:1:40000
Form	Liquid
Conjugate	Non-conjugated
Storage Buffer	Liquid in PBS containing 50% glycerol, 0.5% BSA and 0.02% sodium azide.
Purification Method	The antibody was affinity-purified from rabbit antiserum by affinity-chromatography using epitope-specific immunogen.
Isotype	IgG
Alias	CLASP1; KIAA0622; MAST1; CLIP-associating protein 1; Cytoplasmic linker-associated protein 1; Multiple asters homolog 1; Protein Orbit homolog 1; hOrbit1
Immunogen Species	Homo sapiens (Human)
Target Names	CLASP1

Image



Western Blot analysis of SH-SY5Y cells using CLASP1 Polyclonal Antibody

Usage For Research Use Only. Not for use in diagnostic or therapeutic procedures.