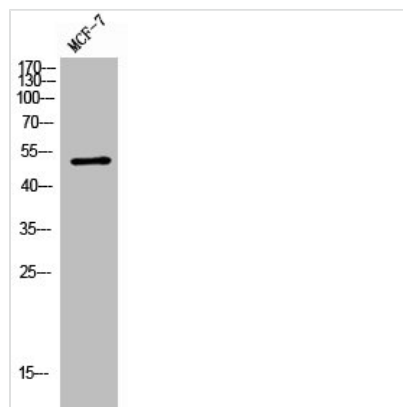




RRP8 Antibody

Product Code	CSB-PA008360
Storage	Upon receipt, store at -20°C or -80°C. Avoid repeated freeze.
Uniprot No.	O43159
Immunogen	Synthesized peptide derived from the Internal region of Human Cerebral 1.
Raised In	Rabbit
Species Reactivity	Human
Tested Applications	WB, IHC, ELISA; WB:1:500-1:2000, IHC:1:100-1:300, ELISA:1:20000
Form	Liquid
Conjugate	Non-conjugated
Storage Buffer	Liquid in PBS containing 50% glycerol, 0.5% BSA and 0.02% sodium azide.
Purification Method	The antibody was affinity-purified from rabbit antiserum by affinity-chromatography using epitope-specific immunogen.
Isotype	IgG
Alias	RRP8; KIAA0409; NML; hucep-1; Ribosomal RNA-processing protein 8; Cerebral protein 1; Nucleomethylin
Immunogen Species	Homo sapiens (Human)
Target Names	RRP8

Image



Western Blot analysis of MCF-7 cells using Cerebral 1 Polyclonal Antibody

Usage

For Research Use Only. Not for use in diagnostic or therapeutic procedures.